
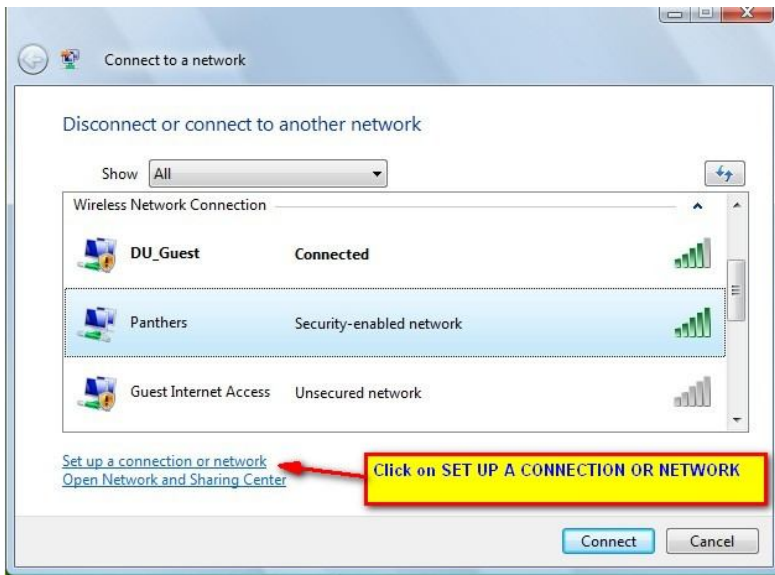


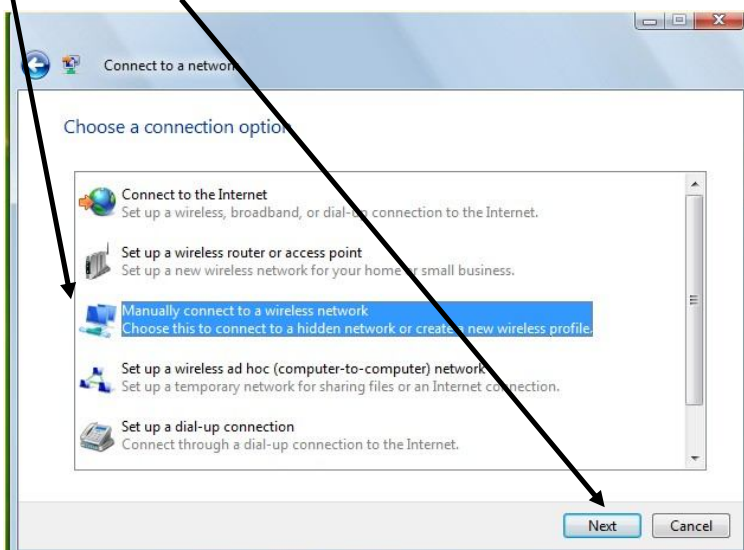
Connecting to Panthers on Windows Vista

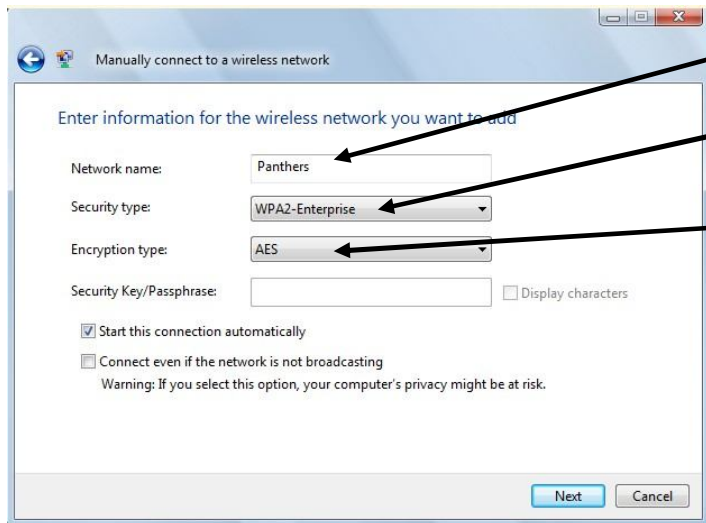
This setup will enable you to access our Wireless Network on the Drury Springfield Campus.

1. Click  and **Connect To**
2. You will see a box showing all the available wireless networks (see picture below)
3. Click on **SET UP A CONNECTION OR NETWORK**



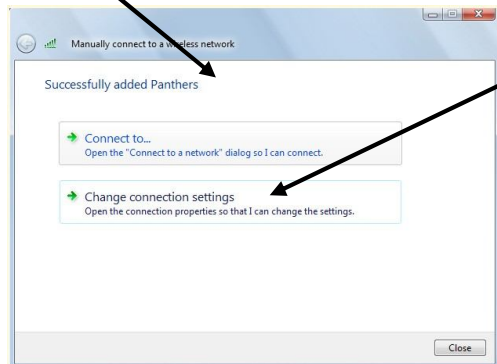
4. You will see a box that will ask you to choose a connection option.
5. Select **Manually Connect to a wireless network**
6. Click **Next**





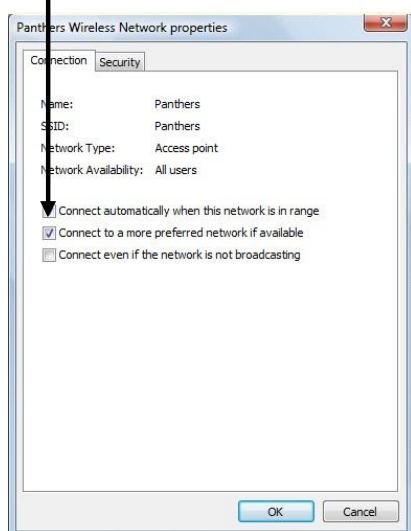
7. Type **Panthers** in Network Name box (Must type Capital "P" and lowercase "anthers")
8. Select **WPA2-Enterprise** from the Security type
9. Select **AES** for Encryption Type
10. Click **Next**

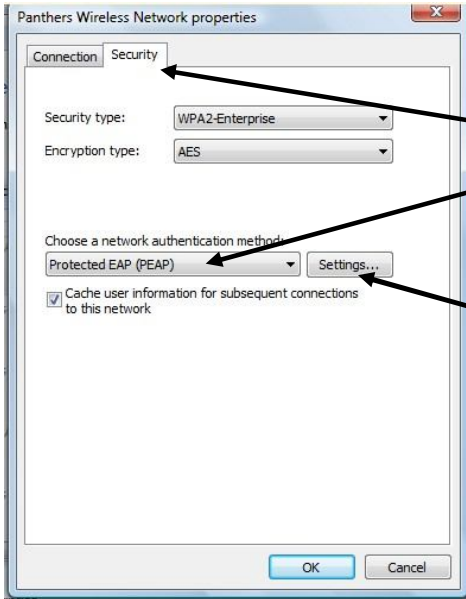
11. A box will appear telling you that you have **Successfully added Panthers**, but there are a few more changes that need to be made.



12. In this box, choose **Change connection settings**

13. On the Connection tab, check just the first box:
Connect Automatically when the Network is in range

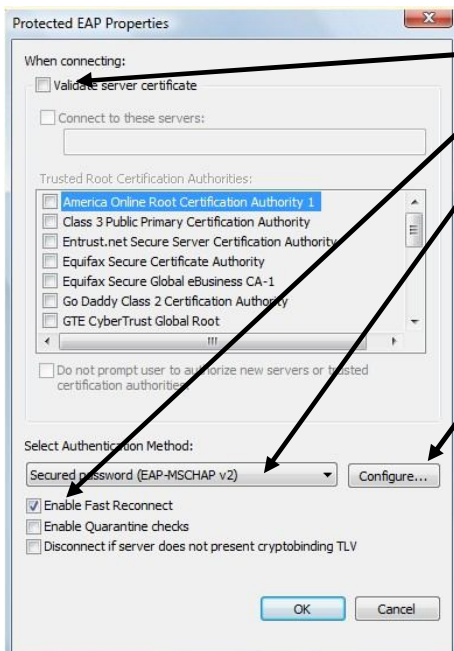




14. Click the **Security** tab

15. Select **Protected EAP (PEAP)** from the drop down list and make certain that **WPA2** and **AES** still showing on Security and Encryption Type

16. Click on **Settings** button for Protected (PEAP)



16. Deselect the **Validate server certificate**

17. **Enable Fast Reconnect** should be checked.

18. Authentication Method should be set to **Secured password (EAP-MSCHAP v2)**

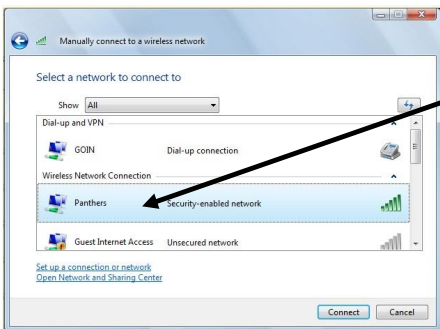
19. Click **Configure** button

20. Uncheck **Automatically use my Windows logon name**

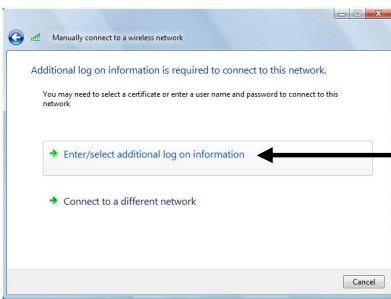
21. Click **OK**



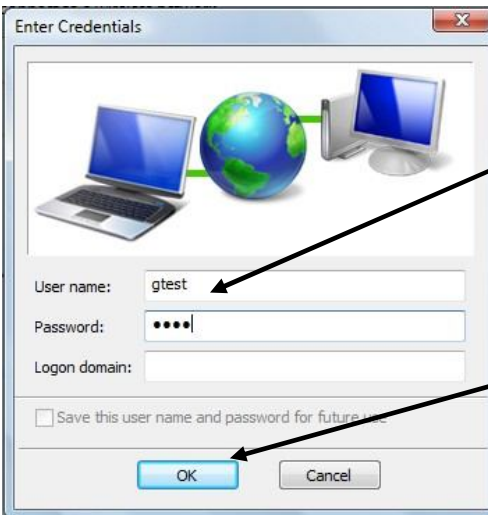
22. OK out of all the boxes until you get back to **Connect to a Network**



23. Double Click on **Panthers**



24. Select **Enter/select additional log information**



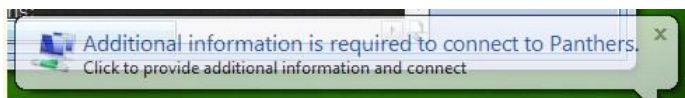
25. **Username** is your Drury Email Username and the **password** is your Drury Email Password

(Leave **Logon Domain** empty)

26. Click **OK**

Please note that sometimes it may take more than one login attempt to access Panthers.

If you see the pop-up shown below, click on it and then you will see the Enter Credentials box again.



Call our Help Desk at **417-873-7300** if you are having problems with the Wireless setup or bring your laptop to our Springfield Hall Help Desk Office (Upstairs next to Springfield Hall Labs)