

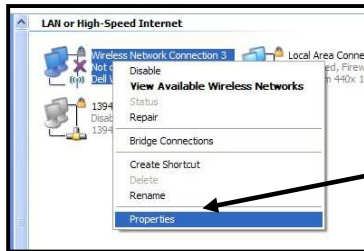
Panthers Wireless Setup Guide for Windows XP



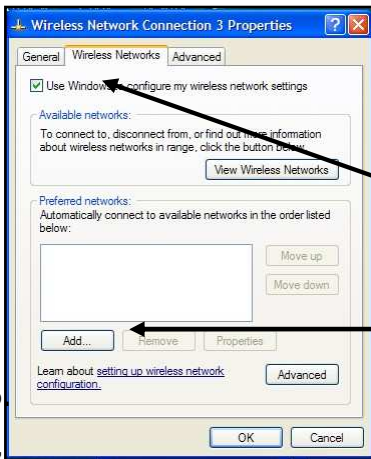
1. Locate the **Wireless Connection Icon** on the bottom right of the Desktop. Right click on **Wireless Icon** to see list of options and select **Open Network Connections**.



2. Find the **Wireless Network Connection** icon in **Network Connections**



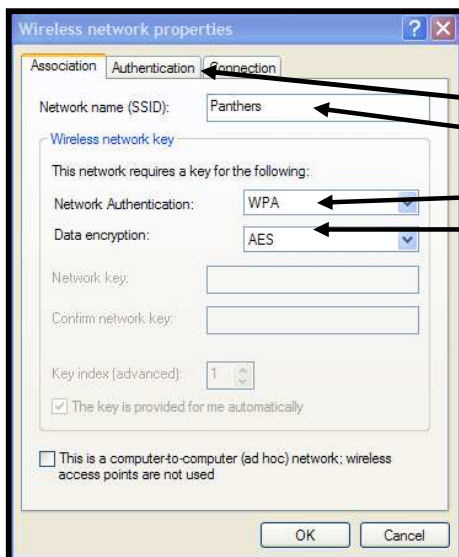
3. Right-click on Wireless Connections to see a list of options. Select Properties from the bottom of the list.



4. You will see a pop-up box with 3 Tabs (General, Wireless Networks, and Advanced) and you will click on the Wireless Networks tab.

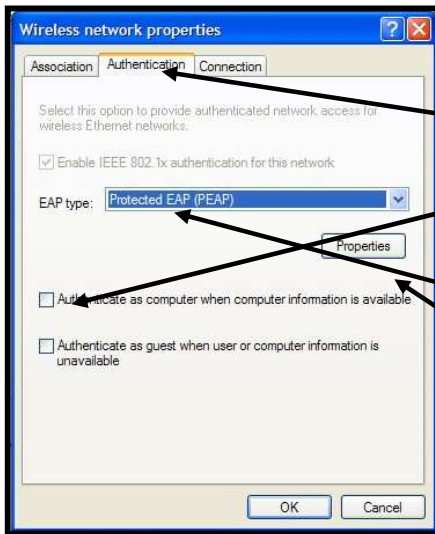
5. click the Add button on the **Preferred Networks (A)**

6.
7.



6. Select the **Association** Tab **(B)**

- A. Enter the Network (SSID) **Panthers**
- B. Change Network Authentication to **WPA**
- C. Change Data Encryption to **AES**

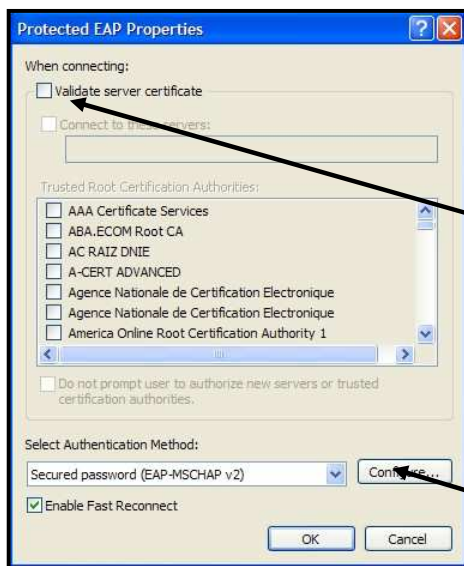


7 Select the Authentication Tab.

A. **Uncheck** the 2 Boxes for **Authenticate as Computer** and **Authenticate as guest**.

B. Select the EAP Protocol (PEAP)

C. Click the Properties Box

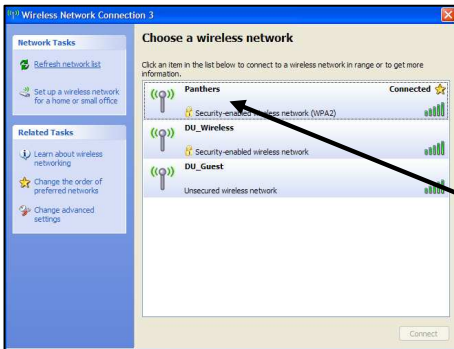


8 Uncheck the **(Validate Server Certificate)**

9 Click on the Configure Button for Secured Password **(EAP-MSCHAP v2)**

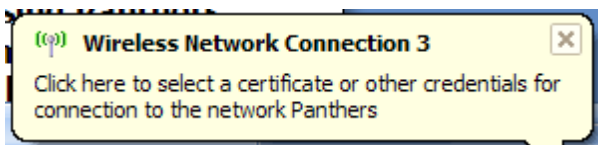


10 Uncheck **(Automatically use my Windows Login)**



11 OK out of all the boxes and return back to the **VIEW WIRELESS NETWORKS**

12 Select **Panthers** in **Choose a wireless network**



13 You will see a **Certificate Prompt** on the bottom right of the Screen and you will click on it to get a login box.



14 You will see a prompt for **USER NAME**, and **PASSWORD** (Enter your Drury Email username and password)

15 Leave **Login Domain** blank

16 You should be connected to the Panthers Wireless Network within a few seconds.

If you need assistance with configuring your computer for the Panthers Wireless Network then bring your computer to our Springfield Hall Help Desk Office or call us at 417-873-7300.

Technology Services Help Desk

Email: help@drury.edu Website: support.drury.edu

PH: 417-873-7300 LOCATION: 2ND Floor Springfield Hall